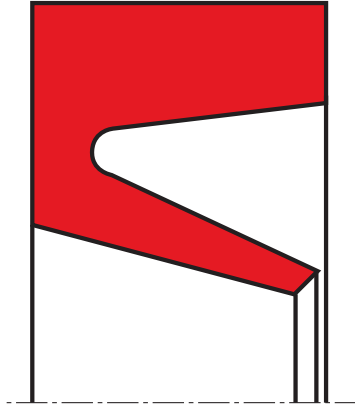


## rotary seal R08-A

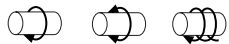
## seal spec



### description

springless rotary lip seal with arbitrary preload on inside and outside diameter in order to design the seal to different specific needs.

### application



### category of profile

machined only.

### single acting rotary shaft seal

### operating parameters & material

diameter range: up to 600 mm

sealing element	temperature	max. surface speed	max. pressure <sup>1</sup>
all material posible	choice is dependent upon application (preload, ...)		

*the stated operation conditions represent general indications. it is recommended not to use all maximum values simultaneously. surface speed limits apply only to the presence of adequate lubrication film.*

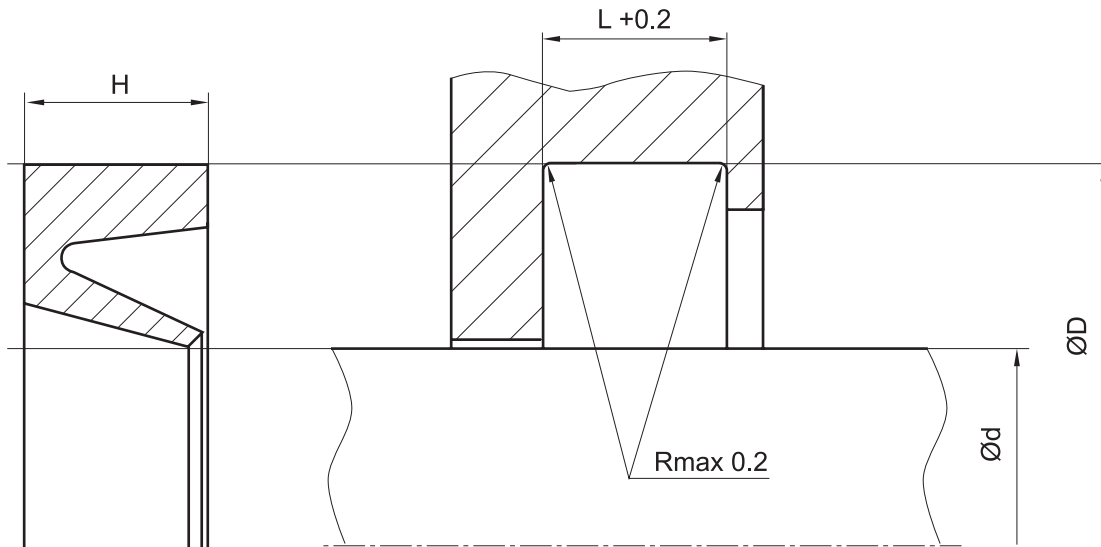


**seal & housing recommendations**

*please note that we are able to produce those profiles to your specific need or any non standard housing. for detail measurements, please see seal-mart catalog...*

**outside diameter of the seal is the order dimension**

**surface finish and tolerance values are dependent upon application**



*don't hesitate to contact our technical department for further information or for special requirements (temperature, speed etc.), so that suitable materials and/or designs can be recommended.*